



THE KIRKWOOD

1,963 SF | 3 BEDROOM | 2.5 BATHS | 2 CAR GARAGE



ELEVATION A



ELEVATION B



5640 WEST MAPLE ROAD, SUITE 110 | WEST BLOOMFIELD, MICHIGAN 48322
248.284.4000 | F 248.284.4001 | INFO@MARKADLERHOMES.COM | MARKADLERHOMES.COM

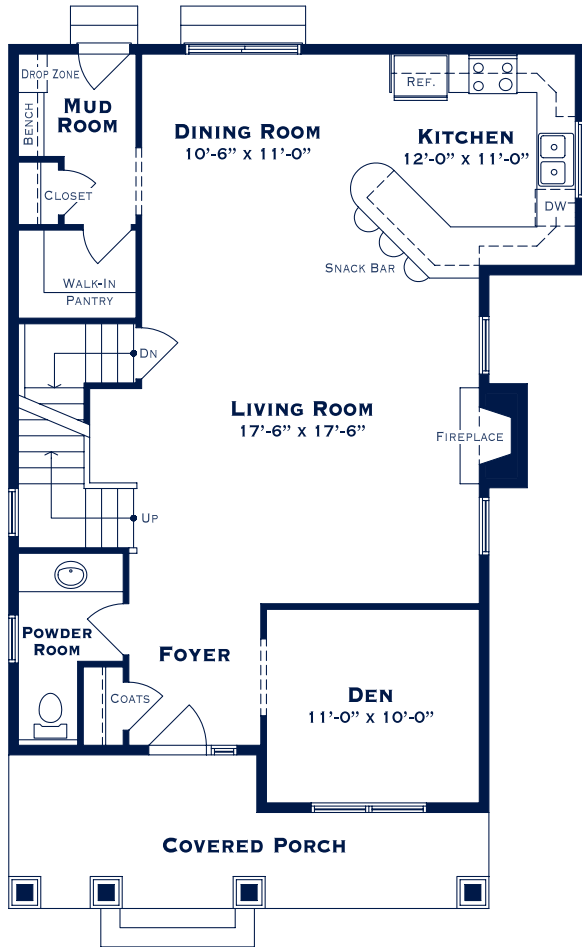
All renderings, photographs, floor plans, dimensions, amenities, upgrades and other information depicted herein are representational only and subject to change at the Seller's sole discretion. © Mark Adler Homes, LLC



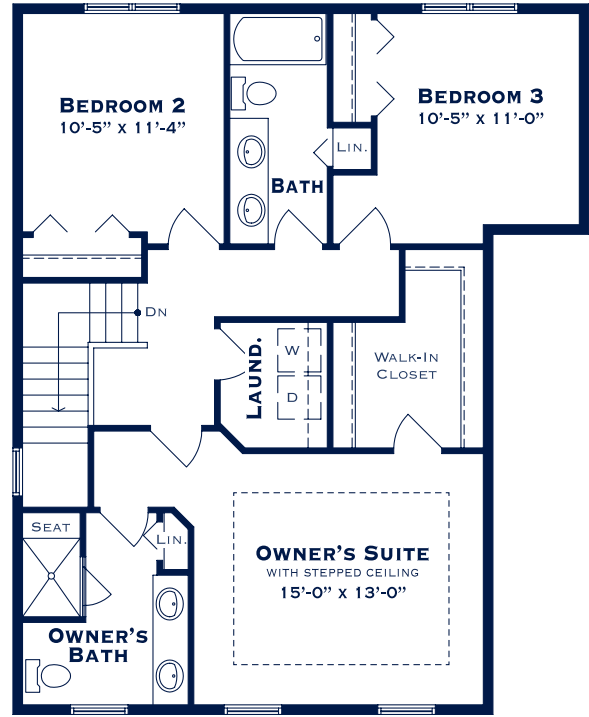


THE KIRKWOOD

1,963 SF | 3 BEDROOM | 2.5 BATHS | 2 CAR GARAGE



FIRST LEVEL



SECOND LEVEL



GARAGE



5640 WEST MAPLE ROAD, SUITE 110 | WEST BLOOMFIELD, MICHIGAN 48322
 248.284.4000 | F 248.284.4001 | INFO@MARKADLERHOMES.COM | MARKADLERHOMES.COM

All renderings, photographs, floor plans, dimensions, amenities, upgrades and other information depicted herein are representational only and subject to change at the Seller's sole discretion. © Mark Adler Homes, LLC

